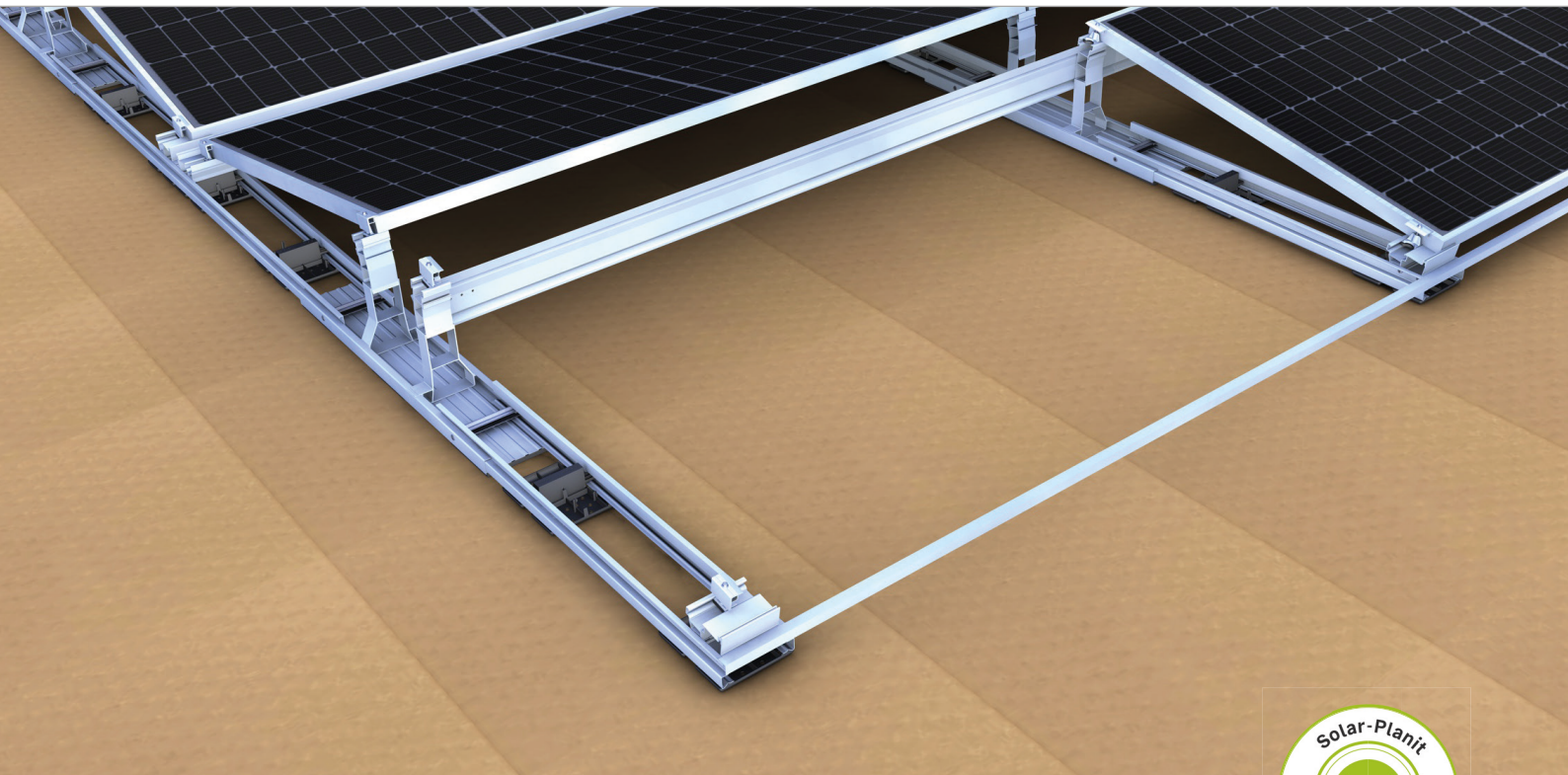
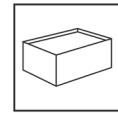


## Flat roof | East-West-System III “The shortcut”

Modular designed clamping system with modules installed in landscape



### The shortcut - The fast way to lots of kWp

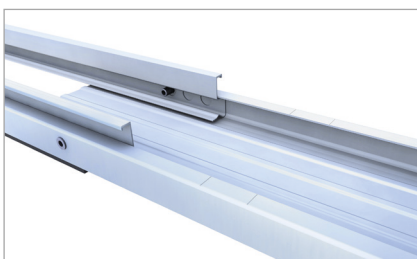
- Maximum utilisation of the roof surface and evenly distributed electricity production
- Efficient use of space thanks to 10° module inclination and landscape installation
- cross connections at module field edges for high stability
- suitable for wide modules

### Product variants

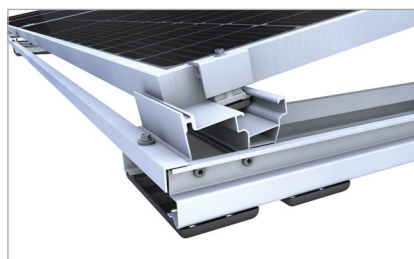
- Only two clamps for all frame heights in blank and black anodized (can also be used in the novotegra pitched roof systems)
- Many optional components e.g. cable channels, ballast troughs and ballast cantilevers

## YOUR BENEFITS

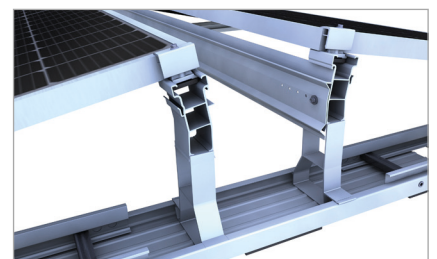
- Simple and quick installation due to high degree of pre-fabrication and tool-free click system
- Low logistical effort and optimal handling thanks to short components
- Wind tunnel tested aerodynamics



Click mechanism for toolless connection

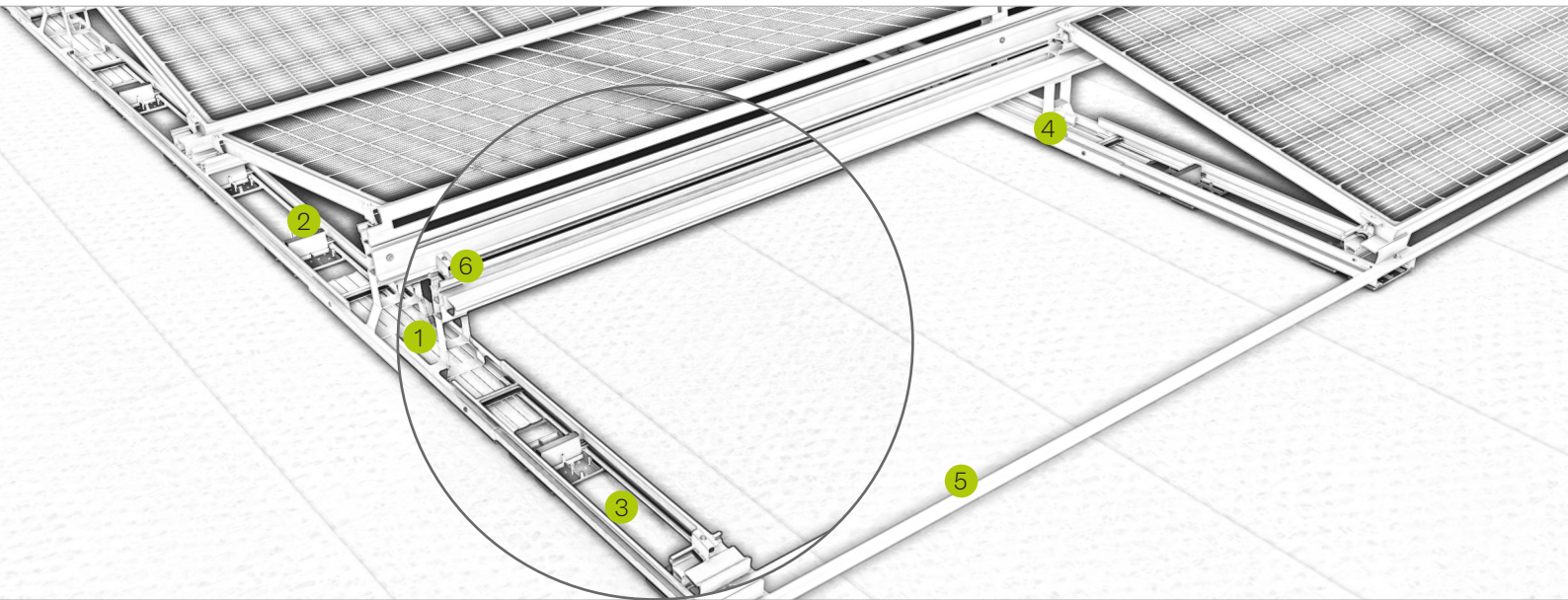


Module field edge with end clamp, base foot and support brace



Base element with click-fit module supports and crossbar

## Flat roof system | east-west system III



### Pic Designation

- 1 **Base element east-west**

  - toolless clickfit of module supports
  - toolless mounting of connector and edge closure sets
- 2 **Connector set east-west**

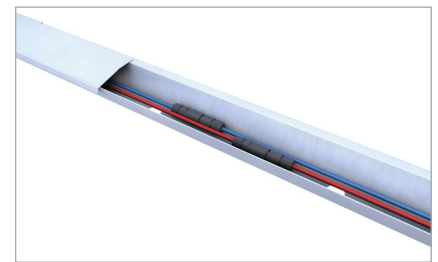
  - for connection of two base elements east-west
  - with integrated (pre-assembled) base feet
- 3 **Edge closure set**

  - for closures at module field edges
  - with integrated (pre-assembled) base foot
- 4 **Module support 10°**

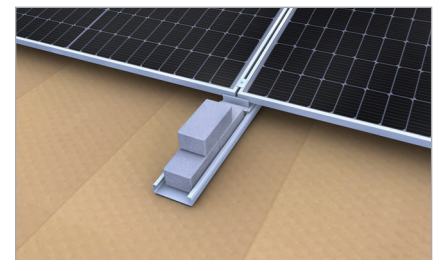
  - toolless clickfit into the base element
  - with integrated holder for cable channel and mounting-set optimizer FR
- 5 **Load transfer at installation edges**

  - via crossbars fixed on the module supports
  - via support braces fixed on the edge closure sets
- 6 **Middle and end clamp**

  - for frame heights of 30-42 mm and 43-52 mm
  - installation-friendly thanks to click-in mechanism



Cable channel can take cables and plugs



Optional ballast cantilever on module field edge

Montagevideo

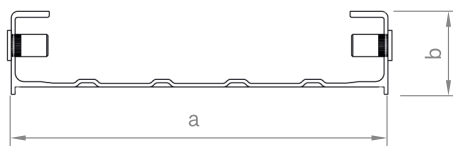
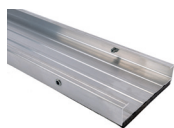


novotegra GmbH  
Eisenbahnstraße 150 | 72072 Tübingen | Deutschland  
Tel. +49 7071 98987-0, info@novotegra.com  
www.novotegra.com

Subject to changes and errors excepted.  
Last updated: April 2021 / TP

## Flat roof III: Single items

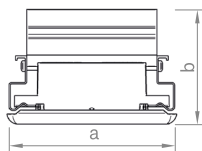
### Base element east-west



Base element for flat roof system III e/w for click-fit of the module supports and connection of connector and edge closure sets. Compatible for module widths 995-1070mm or module widths 1071-1145mm

Item no.	Designation	a in mm	b in mm	c in mm	Material
03-001536	Base element e/w 690mm	150	40		Alu / A2SS / PE
03-001537	Base element e/w 840mm	150	40		Alu / A2SS / PE

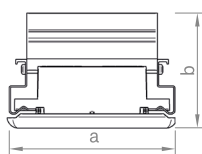
### Connector set east-west



Connector set e/w for flat roof system III with integrated base feet as front module support in installation middle areas.

Item no.	Designation	a in mm	b in mm	c in mm	Material
03-001533	Connector set e/w 1940mm	147	101		Alu / A2SS / PP

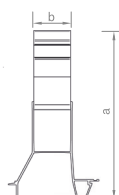
### Edge closure set



Edge closure set for flat roof system III with integrated base foot as front module support at installation edges.

Item no.	Designation	a in mm	b in mm	c in mm	Material
03-001532	Edge closure set 970mm	147	101		Alu / A2SS / PP

### Module support

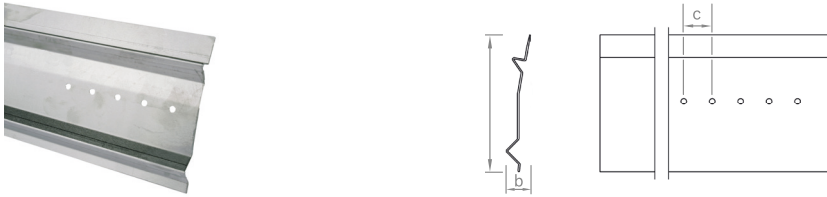


Rear module support for flat roof system III, to clip into the base element and to connect the crossbar and/or cable channel module support.

Item no.	Designation	a in mm	b in mm	c in mm	Material
03-001539	Module support 10°	270	60		Alu

# Flat roof III: Single items

## Crossbar



Crossbar for load transfer, connected to the module supports of flat roof system III.

Item no.	Designation	a in mm	b in mm	c in mm	Material
03-001649	Crossbar 2.00m	120	25		Alu
03-001679	Crossbar 2.40m	120	25		Alu

## Support brace

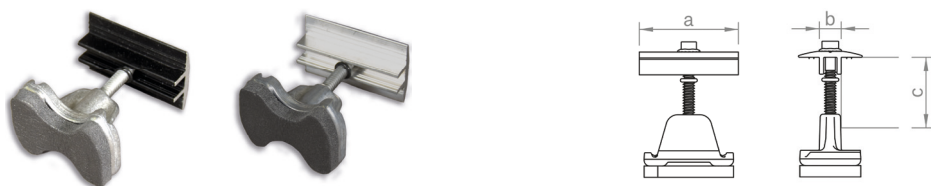


Support brace for load transfer, fixed on the edge closure sets of flat roof system III.

Item no.	Designation	a in mm	b in mm	c in mm	Material
03-001680	Support brace 20x20x1.5 2.00m	20	20		Alu
03-001530	Support brace 20x20x1.5 2.40m	20	20		Alu

## Flat roof III: Single items

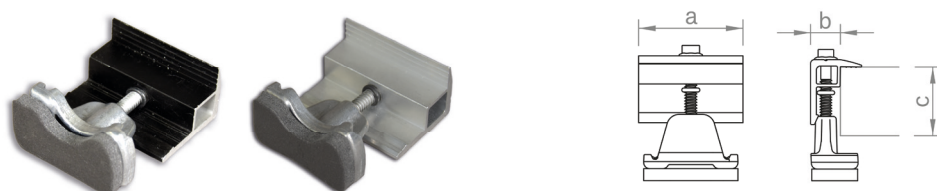
### Middle clamps C-rail



Middle clamp for fixing the modules, installation-friendly thanks to click-in mechanism. Clamping screw with 8 AF hexagon drive. For frame heights of 30–42 mm or 43–52 mm, available in blank or black anodised variations.

Item no.	Designation	a in mm	b in mm	c in mm	Material
03-001345	Middle clamp 30-42 Set C	52	11,4	30–42	Alu / A2SS / PE
03-000285	Middle clamp 43-52 Set C	52	11,4	43–52	Alu / A2SS / PE
03-001346	Middle clamp 30-42 Set C black	52	11,4	30–42	Alu / A2SS / PE
03-000286	Middle clamp 43-52 Set C black	52	11,4	43–52	Alu / A2SS / PE

### End clamps C-rail

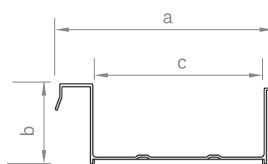


End clamp for fixing the modules, installation-friendly thanks to click-in mechanism. Clamping screw with 8 AF hexagon drive. For frame heights of 30–42 mm or 43–52 mm, available in blank or black anodised variations.

Item no.	Designation	a in mm	b in mm	c in mm	Material
03-001236	End clamp 30-42 Set C	52	14	30–42	Alu / A2SS / PE
03-000287	End clamp 43-52 Set C	52	14	43–52	Alu / A2SS / PE
03-001237	End clamp 30-42 Set C black	52	14	30–42	Alu / A2SS / PE
03-000288	End clamp 43-52 Set C black	52	14	43–52	Alu / A2SS / PE

## Flat roof III: Optional components

### Ballast trough

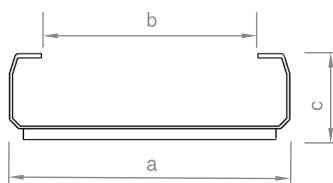
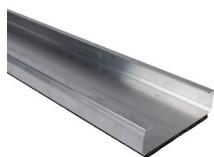


Ballast trough for flat roof system III to clip into the connector and/or edge closure sets for secure placement of large format ballast.

Item no.	Designation	a in mm	b in mm	c in mm	Material
03-001681	Ballast trough 530mm	151	63	120	Alu / PE

## Flat roof III: Single items

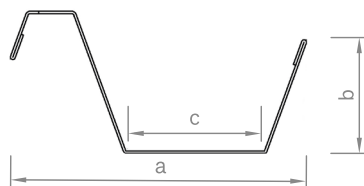
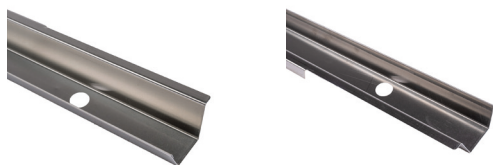
### Ballast cantilever



Ballast cantilever for flat roof system III to redistribute ballast at installation edges. Usable length 500mm and 1000mm.

Item no.	Designation	a in mm	b in mm	c in mm	Material
03-001541	Ballast cantilever 650mm	155	120	47	Alu / PE
03-001542	Ballast cantilever 1150mm	155	120	47	Alu / PE

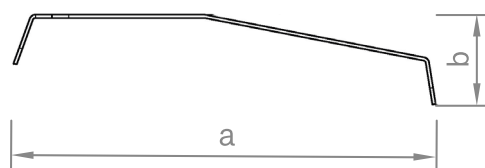
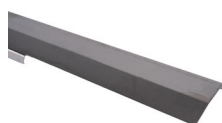
### Cabel channel



Cable channel for flat roof system III to be connected to the base elements and to lay cables lengthwise and connected to the module supports and to lay cables crosswise.

Item no.	Designation	a in mm	b in mm	c in mm	Material
03-001569	Cable channel base element 1250mm	73	28	33	Alu
03-001544	Cable channel module support 2.00m	73	28	33	Alu
03-001686	Cable channel module support 2.40m	73	28	33	Alu

### Cover cable channel



Cover for the cable channels of flat roof system III to protect the cables from UV radiation and weather conditions.

Item no.	Designation	a in mm	b in mm	c in mm	Material
03-001591	Cover cable channel 1250mm	77	16		Alu

### Surface extension



Surface extension for flat roof system III to increase the load introduction surface.

Item no.	Designation	a in mm	b in mm	c in mm	Material
03-001632	Surface extension 180x150mm	180	150	55	PP